



FOUNDRY: AN INNOVATION IN YOUTH HEALTH AND WELLNESS

PRESENTATION TO FCSSBC JUNE CONFERENCE

TANYA BEHARDIEN , EXECUTIVE DIRECTOR, ONESKY COMMUNITY RESOURCES SOCIETY

PAMELA LIVERSIDGE, DIRECTOR POLICY & PARTNERSHIPS, FOUNDRY CENTRAL OFFICE

FOUNDRYBC.CA

TWITTER: @FOUNDRYBC

FACEBOOK:FOUNDRYBC

INSTAGRAM:FOUNDRY_BC



ISSUES WITH MENTAL HEALTH & PROBLEMATIC SUBSTANCE USE START EARLY

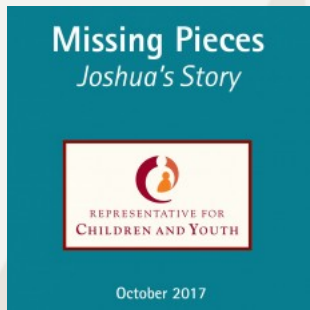
- **1 in 5** youth in BC need help with mental health or substance use
- As few as **25%** of youth who require care receive it
- **75%** of mental illnesses and **80%** substance use problems begin by the age of 24 – and 20 respectively
- Tragically: **1 in 4** fentanyl deaths in BC are young people aged <29 years old (**402** youth since 2012)
- **85%** increase in ED visits over five years (2009 to 2013) for youth aged 15 to 19

GAPS IN OUR SYSTEMS OF CARE: YOUTH AND YOUNG ADULTS

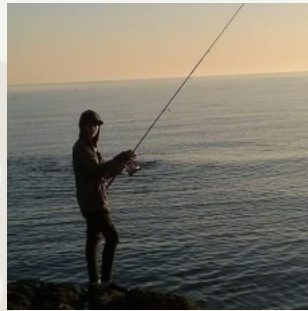
Our system(s) has been described as “fragmented” and a “non-system of care” (Dr Stan Kutcher), in working with young people and families struggling to find access points.

- Lack of Timely Access
- Lack of Service Availability
- Lack of Service Integration
- Difficulty Transitioning Between Child/Youth and Adult Services
- *(Virtually no Services Targeted Specifically at Young Adults 19-25)*

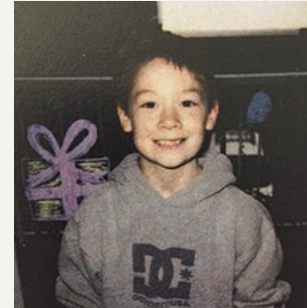
FOUNDRY IMPLEMENTATION: Directives & Recommendations for Change



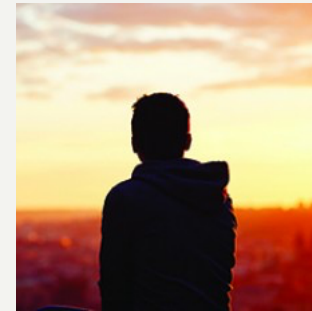
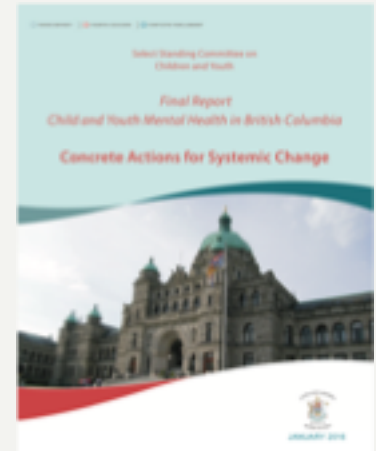
Missing Pieces:
Joshua's Story



Last Resort: One
Family's Tragic
Struggle to Find
Help for Their Son



Broken Promises
Alex's Story



A Tragedy in
Waiting: How
B.C.'s mental
health system
failed one First
Nations youth



A Review of
Youth Substance
Use Services in B.C.



Still Waiting: First
Hand Experiences
with Youth Mental
Health Services in
BC

 Ministry of Health Policy Instrument	
Type:	General Policy Document
Policy Name:	Establish Primary Care Networks
Version:	1.0.0 (Draft)
Effective Date:	
Division Branch:	Primary and Community Care Policy
Division:	Primary
Ministry Council:	Executive Decision, Primary Care
Discussion Number:	4000
Date:	September 26, 2017





VISION

Transform access
to health and social
services for youth
and families.

BY THE END OF 2019, WE WILL HAVE 11 FOUNDRY CENTRES ... AND HOPE FOR MORE

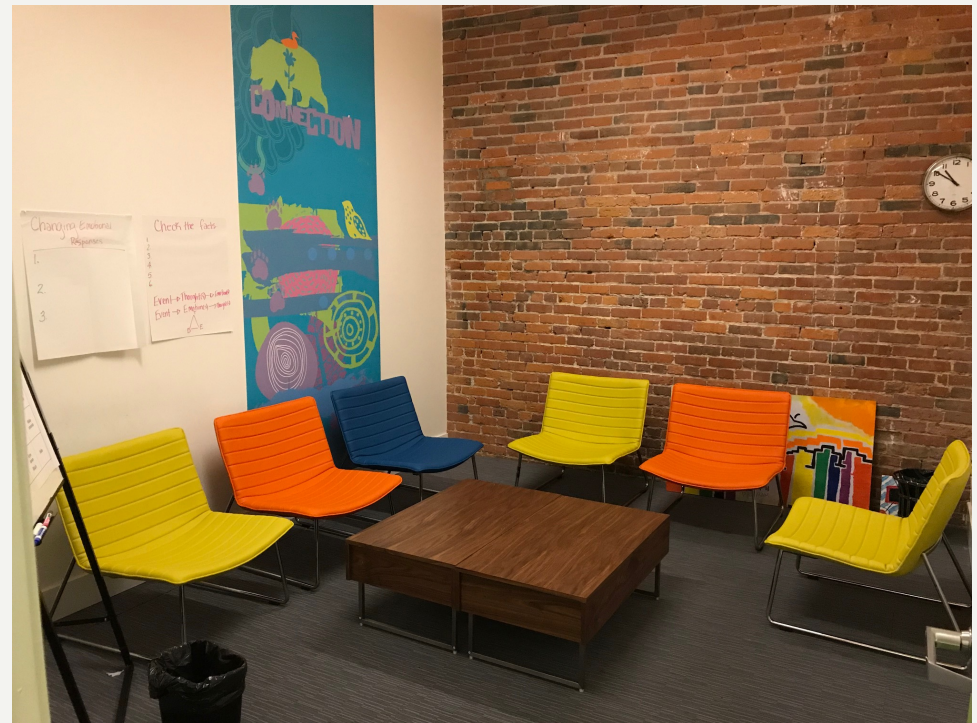


- Phase 1 communities:
 - Campbell River - Open
 - Kelowna - Open
 - North Shore - Open
 - Prince George - Open
 - Vancouver-Granville - Open
 - Abbotsford - Open
- Phase 2 communities:
 - Victoria - Open
 - Penticton - Opening winter 18/19
 - Ridge Meadows
 - 2 more to be announced!

FOUNDRY VANCOUVER-GRANVILLE

OPENED MARCH 2015

OPERATED BY PROVIDENCE HEALTH CARE



FOUNDRY CAMPBELL RIVER

OPENED APRIL 2017
OPERATED BY JOHN HOWARD SOCIETY



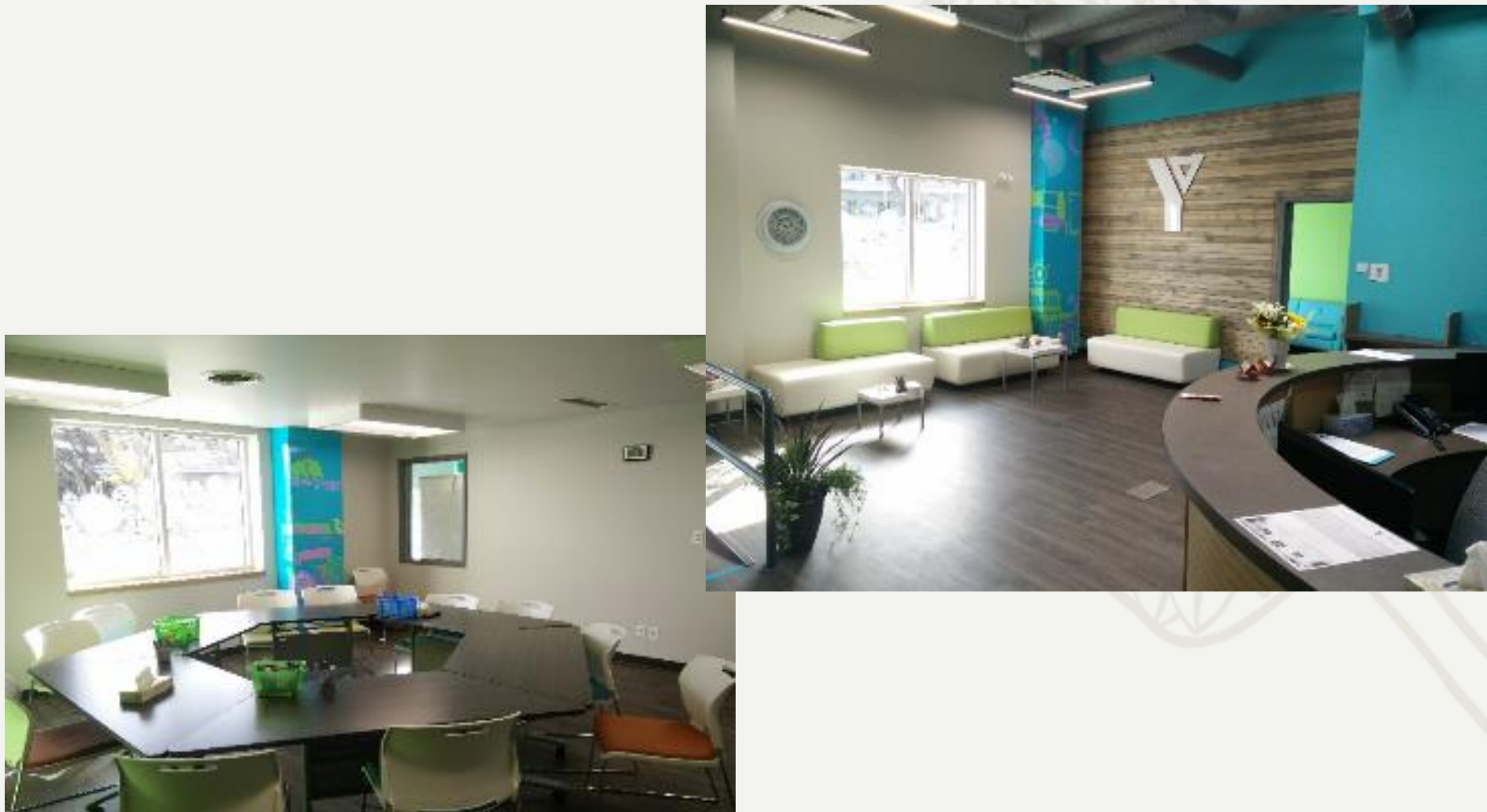
FOUNDRY KELOWNA

OPENED SEPTEMBER 2017
OPERATED BY CMHA KELOWNA



FOUNDRY PRINCE GEORGE

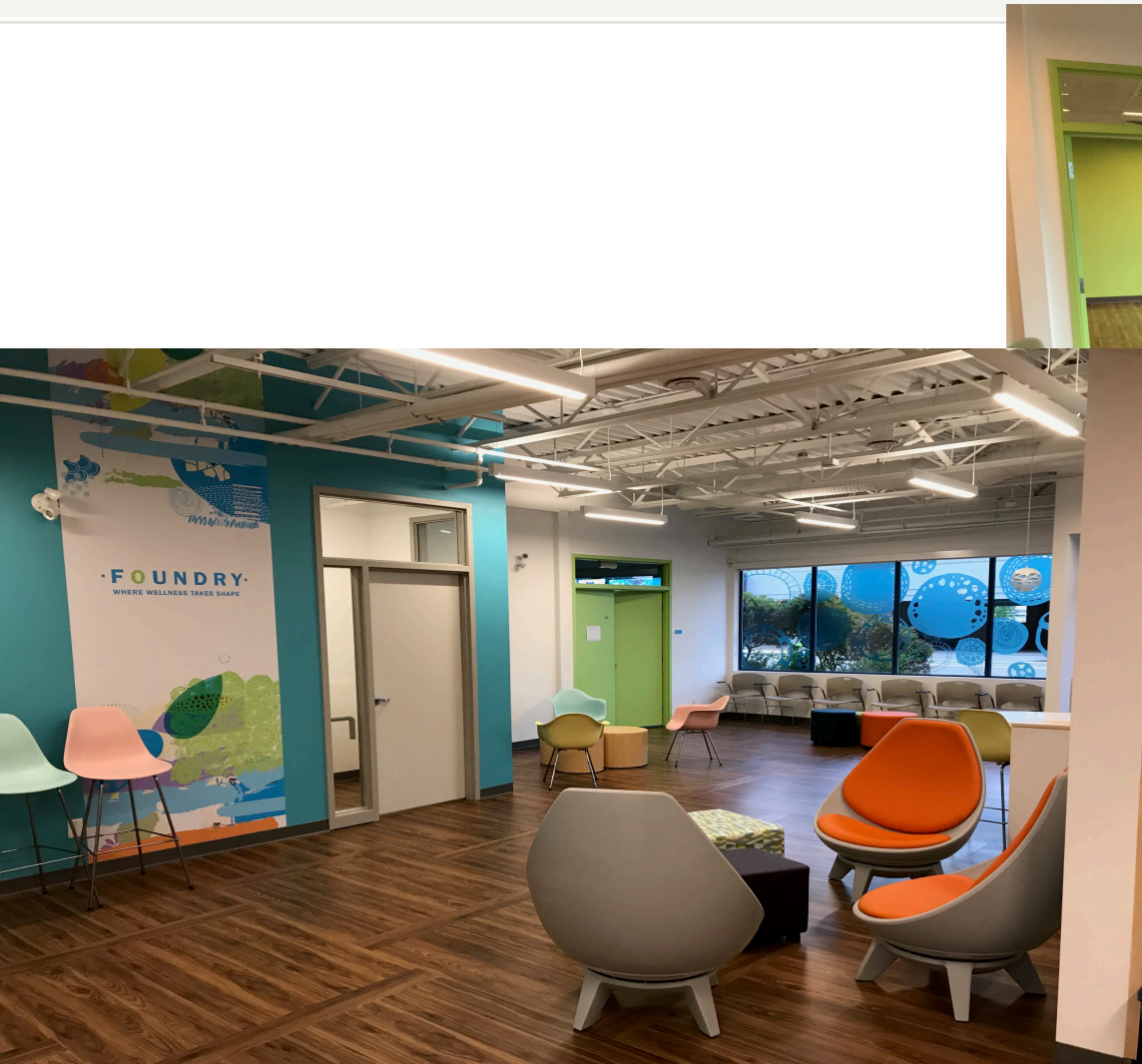
Opened July 2017
OPERATED BY YMCA NBC





FOUNDRY ABBOTSFORD

Opened JUNE 2018
OPERATED BY ABBOTSFORD COMMUNITY SERVICES



FOUNDRY IS OVER 120 PARTNERS (AND COUNTING) WORKING TOGETHER



FOUNDRY PENTICTON PARTNERS – SERVICE DELIVERY

Access Centre

Boys & Girls Clubs of Okanagan

Canadian Mental Health Association, South Okanagan
City of Penticton

Division of Family Practice

Interior Health

Ministry of Children & Family Development

OneSky Community Resources

Opt Clinic

Pathways Addictions Resource Centre

RADAR

School District 67

Smart Recovery

South Okanagan Women In Needs Society

YES Project

YMCA Okanagan

FOUNDRY Penticton- The Build

Engage (Feb-Apr)

- Hire Designer/Architect
- Full Measured Survey
 - Consultation with Youth, Parents and Partners
 - Space Planning/Functional Program

Design (May-Jun)

- Design
 - Fixture Specification
 - Furniture Specification
 - Medical Equipment Specification
 - Consultation

Build (Jun-Nov)

- Construction Drawing Package
 - RFP Documentation/Issue/Evaluation
 - Construction Management/Trades

NOVEMBER- 'SOFT' OPENING!

FOUNDRY PENTICTON: KEY DATES AND MILESTONES

May

- Hiring of Centre Manager
- Peer Support Program Training
- Design & Initial Drawings
- Evaluation- Environmental Scan

June

- Centre Manager Starts Work
- Public Fundraising Campaign Begins
- Construction Drawings & RFP Issue
- Foundry Provincial Gathering

Summer

- Renovations Begin with Trades
- Partnership Development- Service Delivery
- Walk In Counseling- Training

FOUNDRY: MEANINGFUL YOUTH & FAMILY ENGAGEMENT

- Involves intentional, ongoing, collaborative partnership between youth, families and service providers
- Helps people to understand the work in new way
- Ensures young people and family members feel a part of the work and that their contribution enhances the outcome



FOUNDRY: MEANINGFUL YOUTH & FAMILY ENGAGEMENT

- Creates opportunities for youth to provide input and inform decision-making
- Builds a community of practice
- Ensures youth feel a sense of community, belonging, ownership and appreciation



“There’s all the services in one place that you need.”



“The environment is welcoming, and the people are great. Thank you all very much for creating a space where I can feel safe and supported.”

“I like how Foundry doesn’t just focus on one aspect of our lives and how to help it, but rather all the factors in my physical, mental, emotional health, as well as housing, work, school etc.”

- Comments from youth at Foundry Centres

FOUNDRY: COLLABORATIVE, MULTI-SECTOR FUNDING MODEL

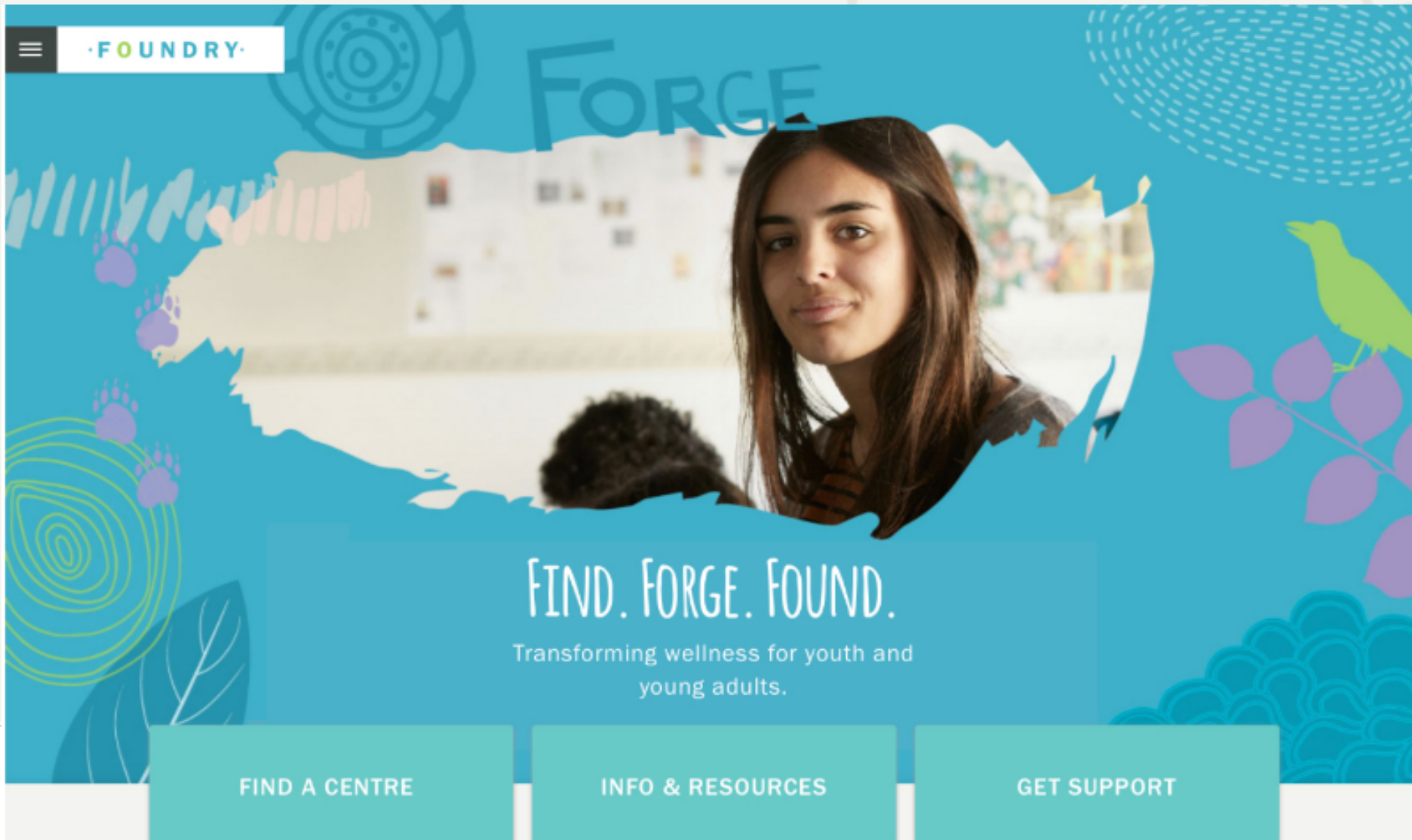
Centrally:

- **Province of BC:** BC Ministries of Health, Children and Family Development, and Mental Health and Addictions
- **Graham Boeckh Foundation**
- **Donors to St. Paul's Foundation**
- Evaluation: **Michael Smith Foundation for Health Research**
- Hosted by: **Providence Health Care**

In communities:

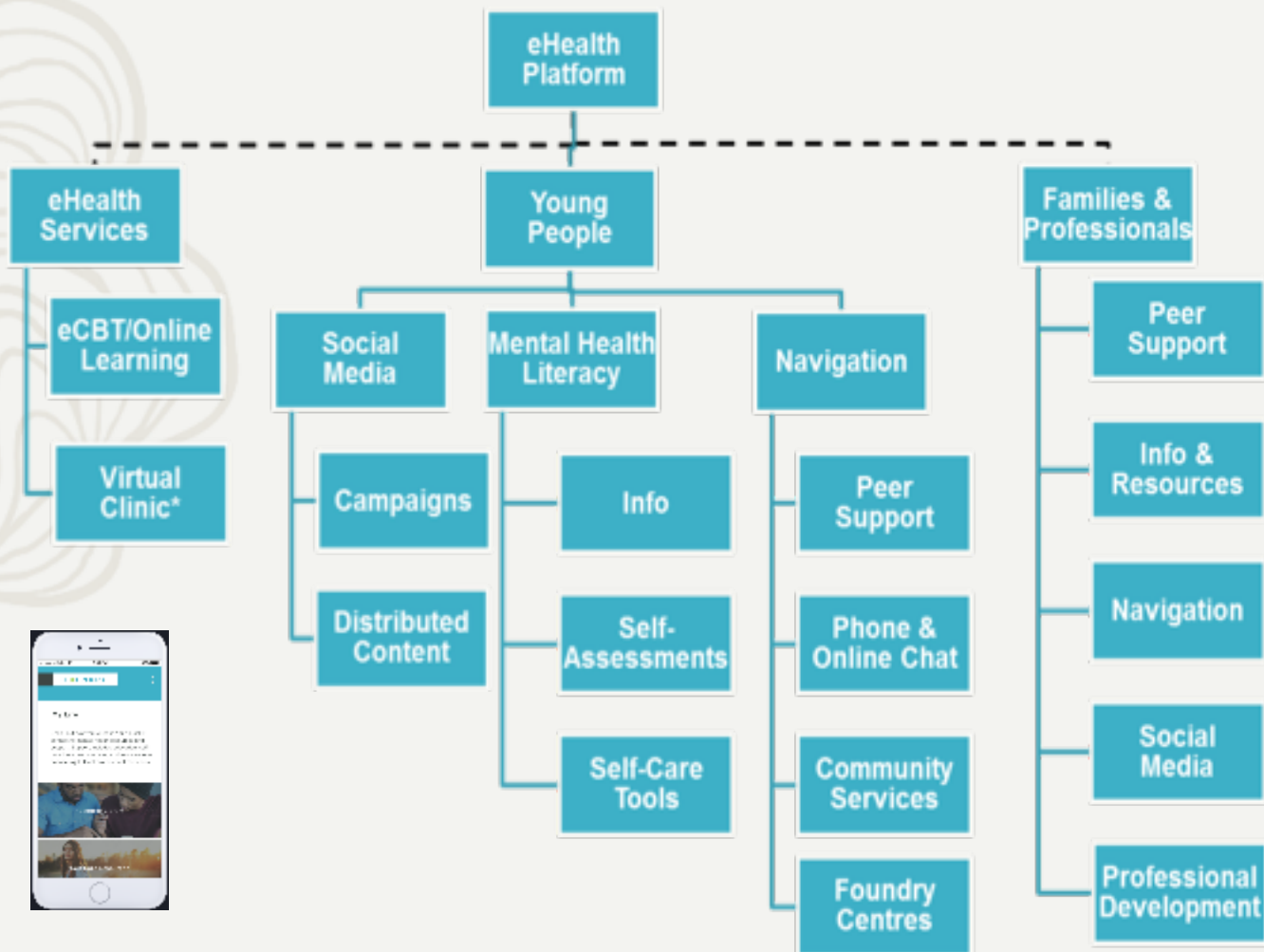
- Existing, in-kind non-profit, health, and other government resources averaging \$1.5M-2M per centre
- Community-based fundraising campaigns ranging from \$50,000 to \$3 million, often in partnership with foundations

FOUNDRY ONLINE LAUNCHED JANUARY 2018
POWERED BY BC CHILDREN'S HOSPITAL
FUNDED BY RBC



FOUNDRY ONLINE

A 'one stop hub' for BC youth, families and caregivers



*Virtual Clinic is a desired future state.

FOUNDRY NATIONAL SURVEY ESTABLISHED AN UNDERSTANDING OF YOUTH HEALTH

Integrated Youth Services Initiative

Summary of Results



Gaps in access to health services are found



Top 3 critical factors in a youth's health care provider

- 81% • Ability to listen
- 81% • Respectful
- 80% • Protects privacy



32%

Of youth had to leave their community to access health services

Health Services Used by Youth in the Past Year

- 72% • Family doctor
- 69% • Walk-in clinic
- 64% • Online websites / searches
- 46% • Hospital ER
- 24% • Counselling centre
- 23% • Telehealth
- 22% • Health app

64%

Find it difficult to talk about substance use



58%

Most youth would go to a **doctor** if looking for mental health support

65%



Of youth would like to learn about youth services online

The **Internet** and **family** are the most common resources youth turn to when looking where to go for assistance



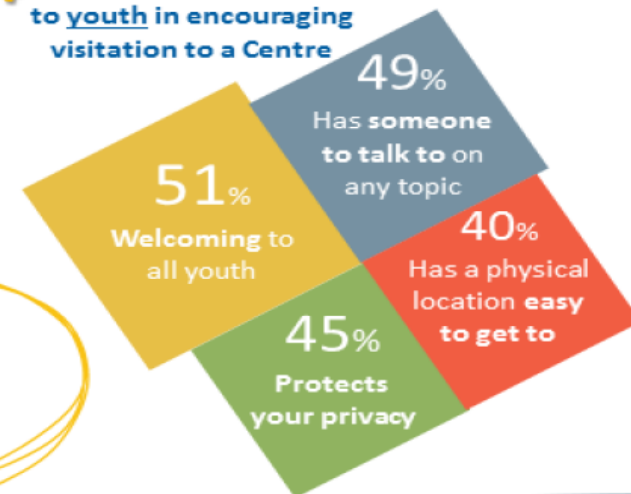
However...

Results suggest that parents are not aware of the extent to which youth search for **health-related information**.

Most important attributes of a Youth Centre:

- ✓ Protect your privacy
- ✓ Welcoming to all youth
- ✓ Someone to talk to about any topic

4 factors most important to youth in encouraging visitation to a Centre



84%

feel it's easier to tell someone about not feeling well **physically** than it is to tell someone about not feeling well **mentally**



55%

Of youth experienced **mental health issues**

16%

Of youth experienced **substance use challenges**

But, only...



26%

Of youth have been **diagnosed** with a mental health issue



7%

Of youth have been **diagnosed** with substance use challenges

46%

Of youth are currently receiving treatment

24%

Of youth are currently receiving treatment



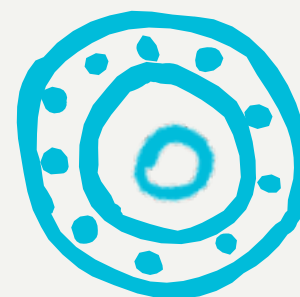
80%

Believe an integrated youth service centre is needed in their community

ENGAGEMENT AND CONSULTATION WITH YOUTH, FAMILIES AND PROVIDERS

National and Provincial Consultation... 3 objectives

1. Assessing challenges & barriers to access health services
2. Understanding perceived need for youth integrated health
3. Exploring features & attributes youth, parents and service providers want in an integrated youth services centre



OUR BRAND TOOK A YEAR TO DEVELOP WITH
HUNDREDS OF YOUTH CONSULTED...



FIND HELP, HOPE, SUPPORT, FIND YOURSELF.

FORGE NEW CONNECTIONS AND NEW ABILITIES.
FORGE YOUR PATH FOR WELLNESS.

A **FOUNDATION** FOR HEALTH AND WELL-BEING.
A FOUNDATION FOR WHO YOU WANT TO BE.

WELCOME TO FOUNDRY.

FOUNDRY CENTRAL TEAM IS THE BRIDGE BETWEEN OPERATORS, HEALTH AUTHORITIES AND GOVERNMENT



THE FOUNDRY MODEL: INTEGRATED STEPPED CARE

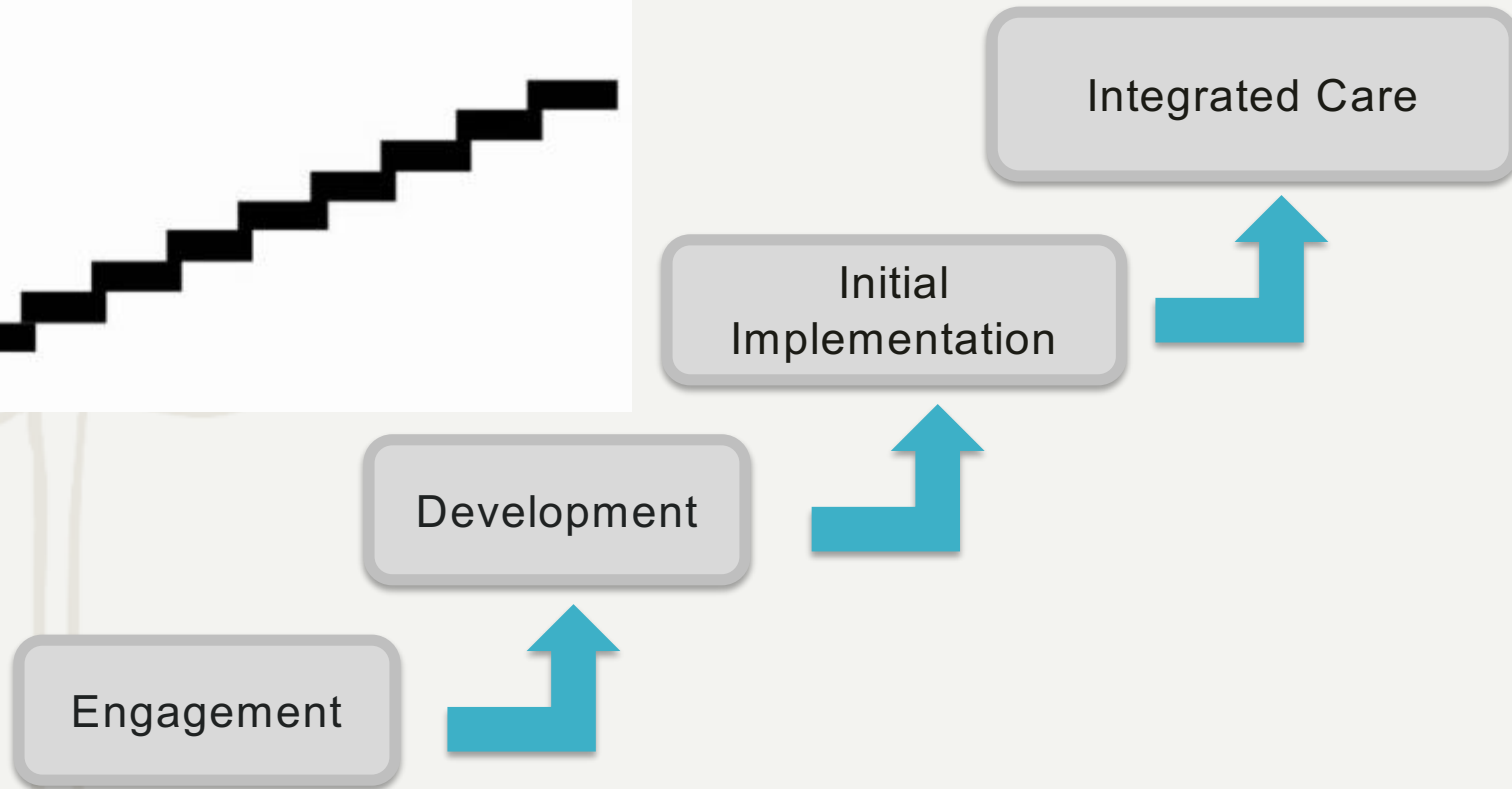
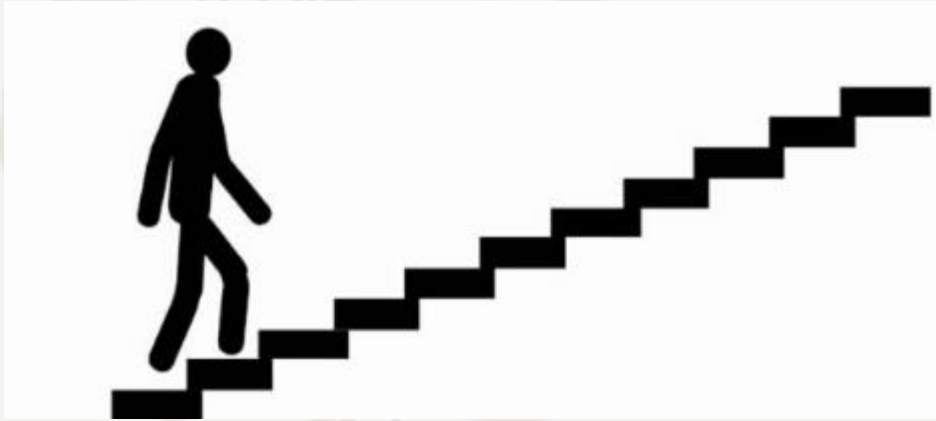


FOUNDRY PEER SUPPORT CURRICULUM

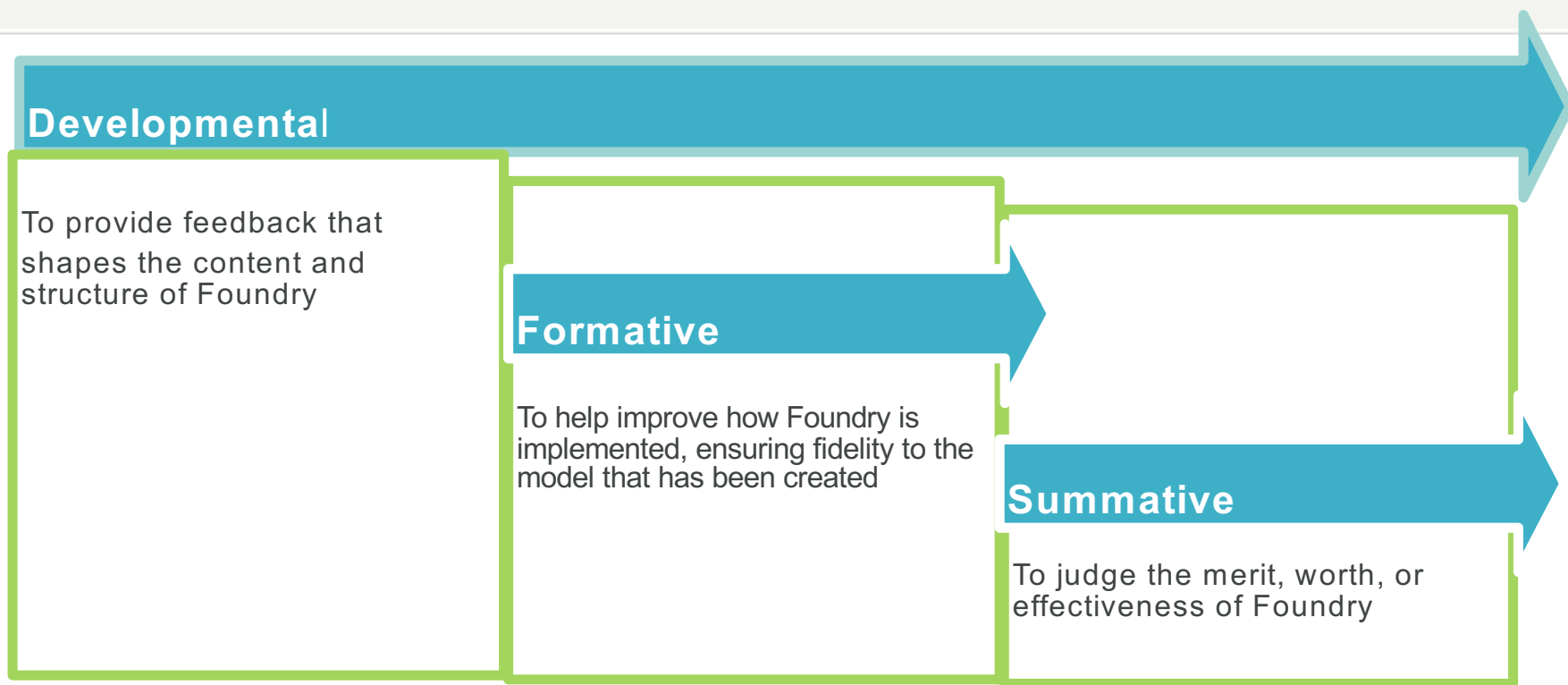
- Funded by a donation from RBC to St. Paul's Foundation
- First in BC; only open-source curriculum in Canada
- Adult peer support curricula had been adapted but wasn't meeting the need
- Peer Support is a key element of the Foundry program – need to ensure centres are offering consistent, quality services



CREATING FOUNDRY: THE CONTINUUM OF INTEGRATION IS A 3 YEAR + PROCESS



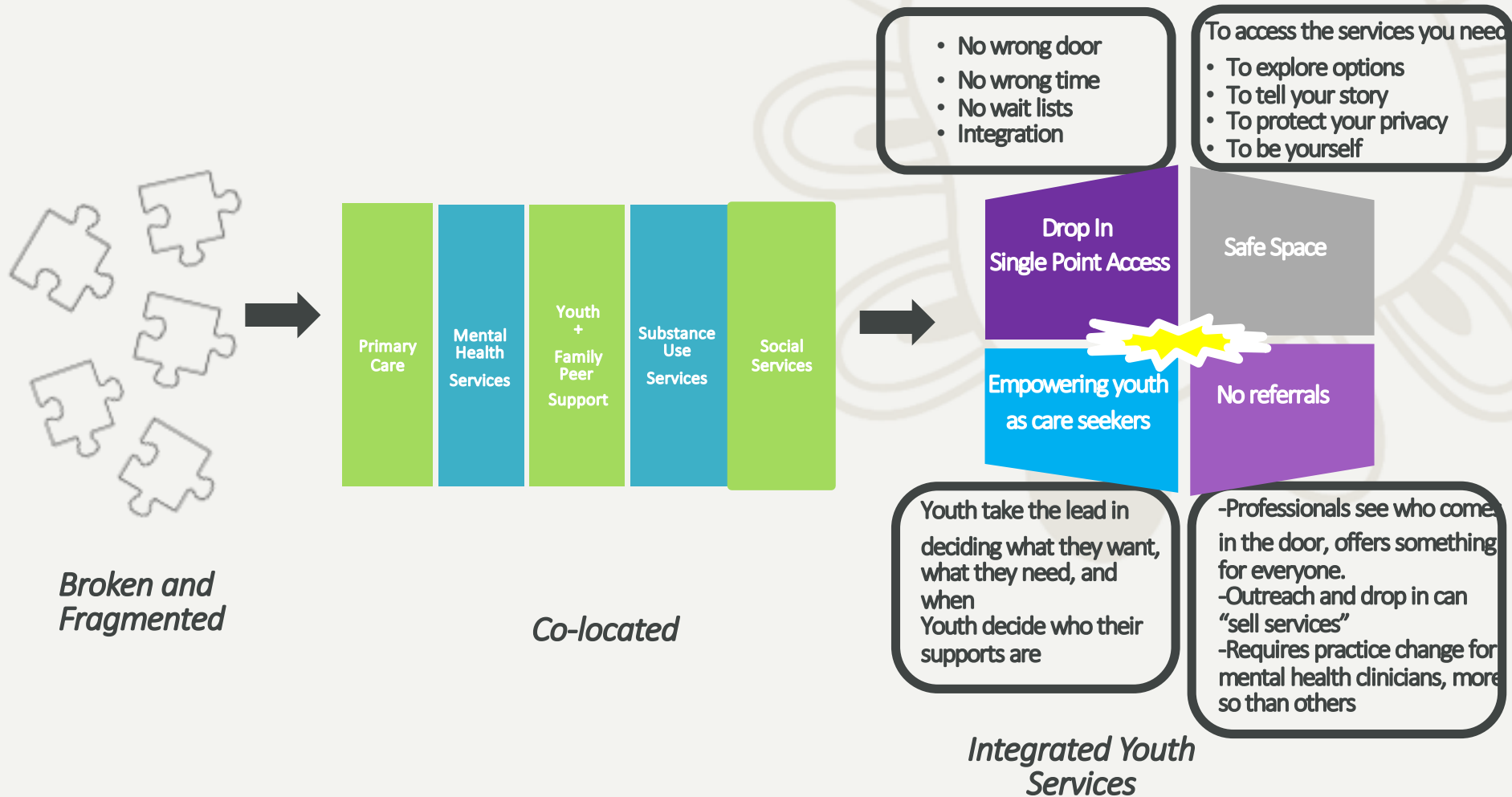
FOUNDRY: 3 TYPES OF EVALUATION UNDERWAY



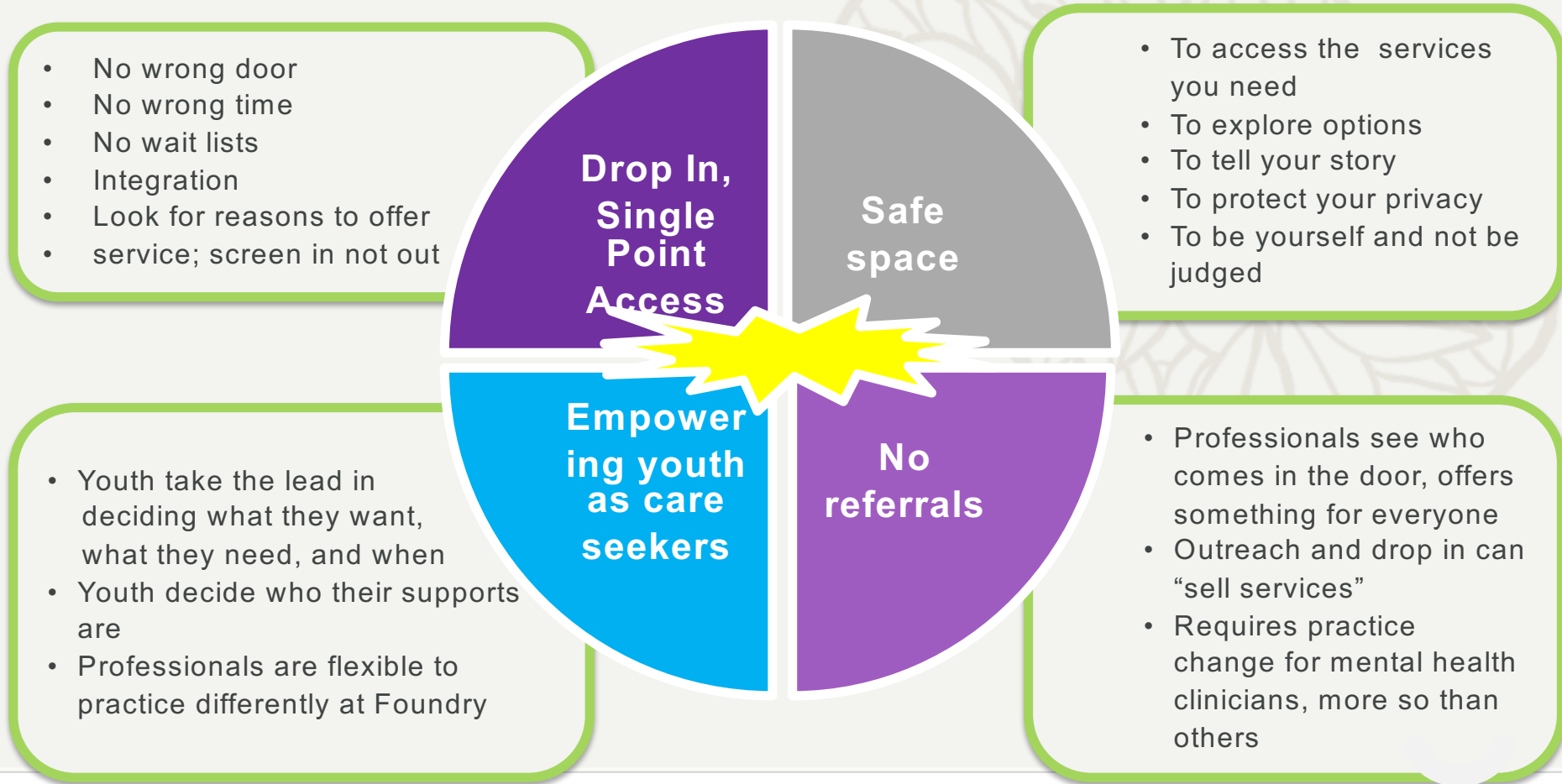
Data collection methods: interviews, focus groups, surveys, clinical and administrative data

Target groups: youth, family/caregiver, Foundry staff, Foundry centre leadership and community partners

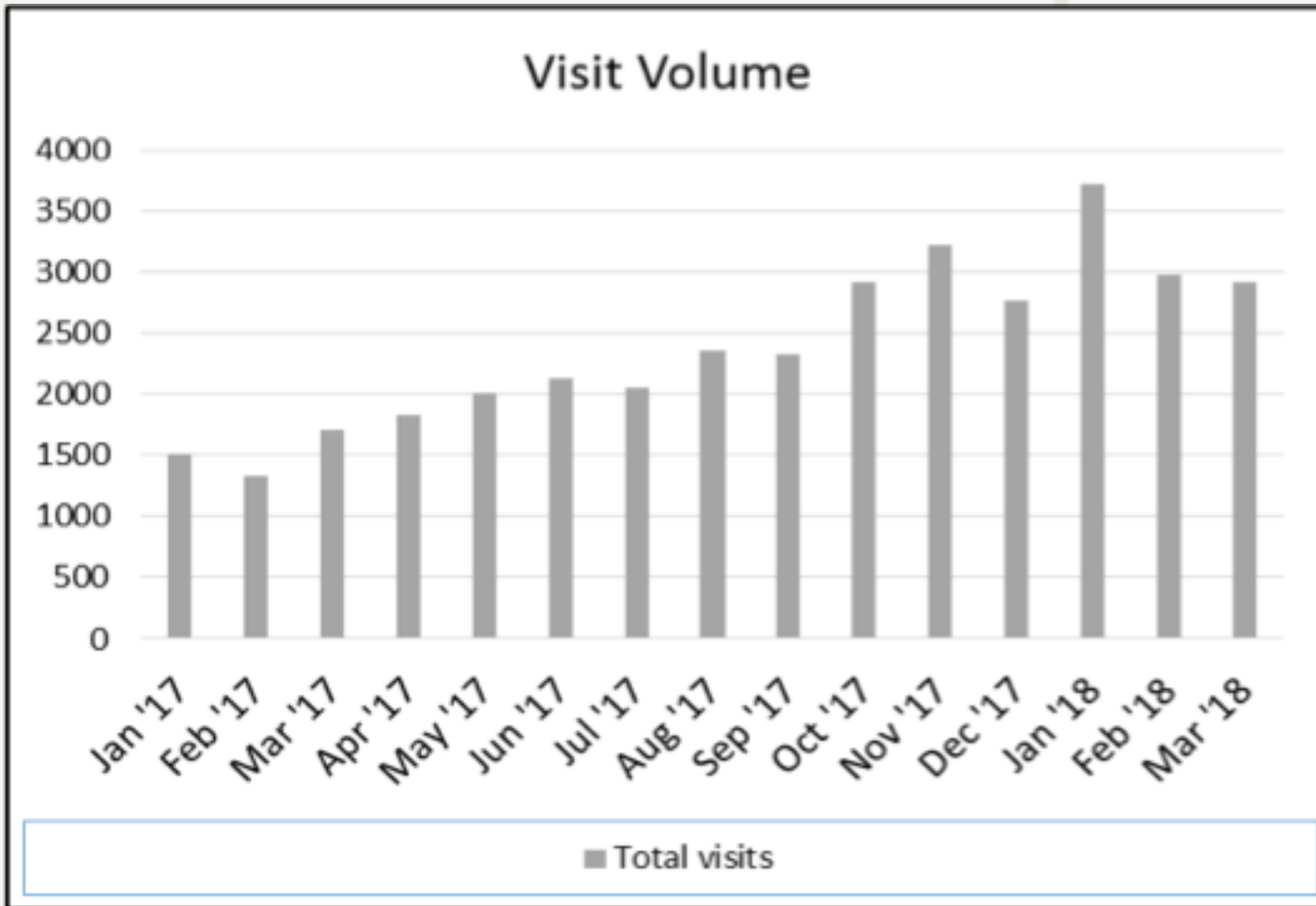
FOUNDRY: THE TRANSFORMATION WE'RE SEEING



CORE COMPONENTS OF A FOUNDRY CENTRE: CYCLE 2



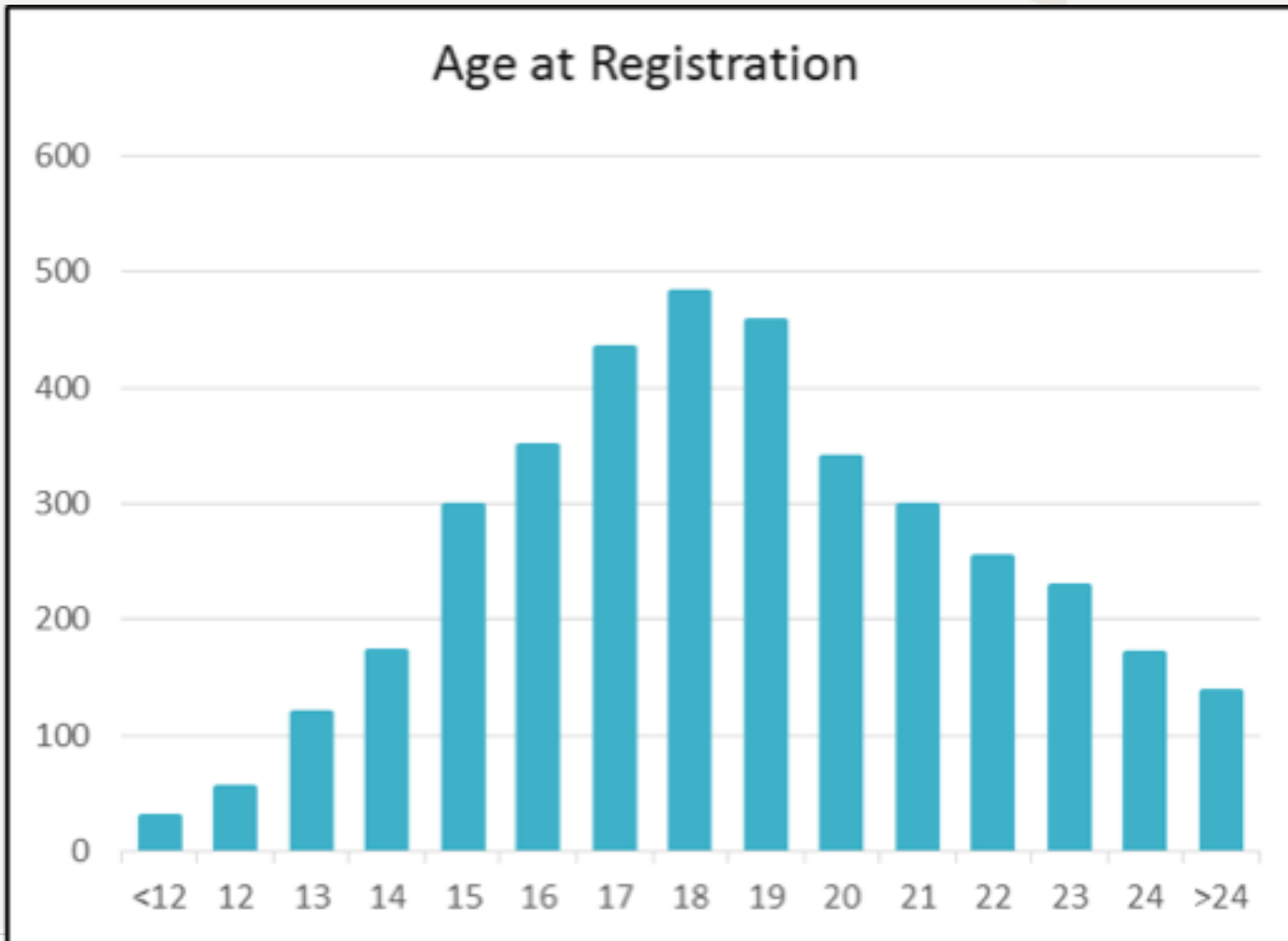
FOUNDRY: TOTAL VISITS



Foundry provided services to 4783 youth between Jan 2017-Mar 2018.

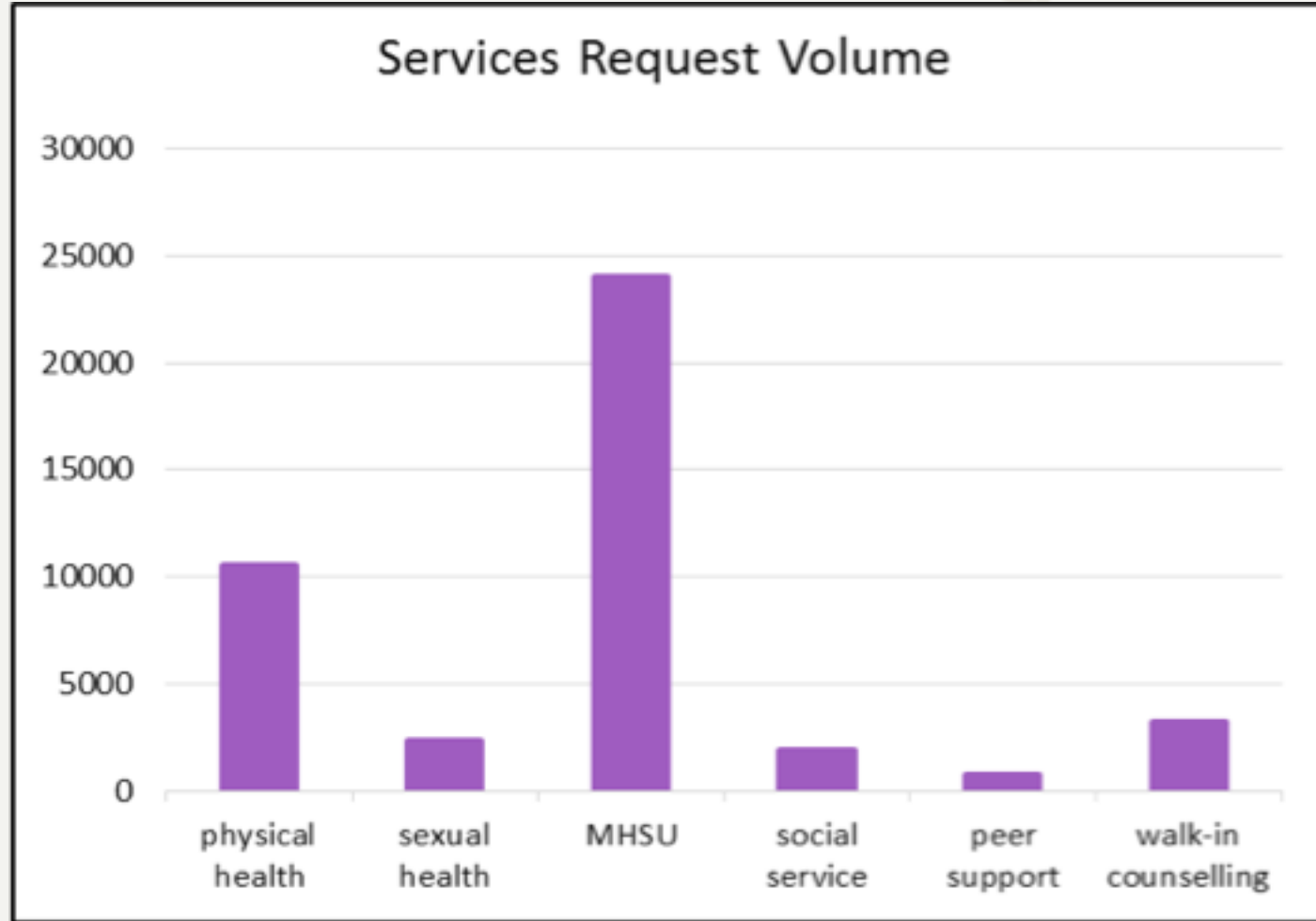
Total visits during this period was 35,791.

FOUNDRY: AGE AT REGISTRATION



63% of young people coming through the doors were 19 years old or younger *at first visit to FounDry*

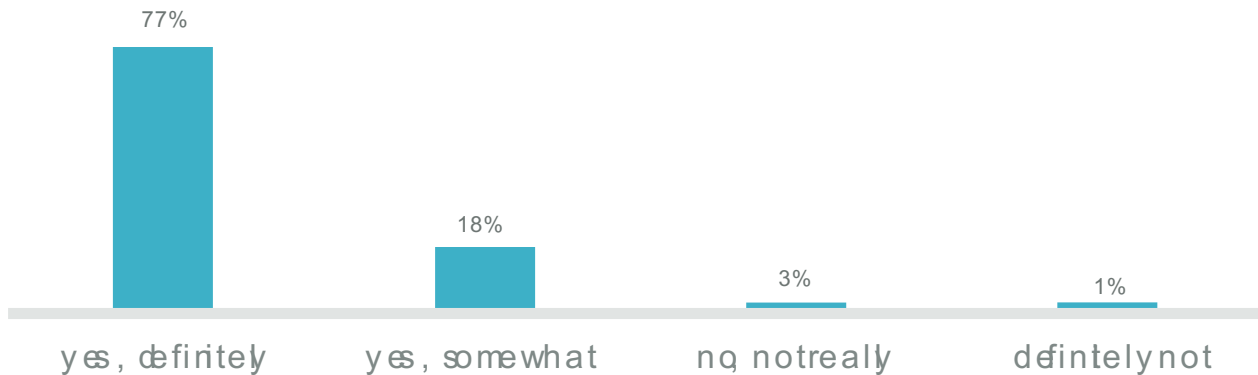
FOUNDRY: SERVICES REQUEST VOLUME



Most commonly requested service was mental health & substance use (MHSU)

FOUNDRY VANCOUVER-GRANVILLE: SATISFACTION WITH SERVICES

**95% youth would recommend the
Granville Youth Health Centre to
their friends**



716 youth completed the youth satisfaction survey, between August 2015 and April 2017.

SHARING THE FOUNDRY MODEL AND INTEGRATED YOUTH SERVICE DELIVERY

The Foundry Central Office is consulting with:

- Ontario – Youth Wellness Hubs Ontario, CAMH
- Quebec Government
- Newfoundland Government
- Alberta Health Services
- Stanford University and Mental Health Oversight and Accountability Commission of California

· FOUNDRY ·

WHERE WELLNESS TAKES SHAPE

QUESTIONS?

