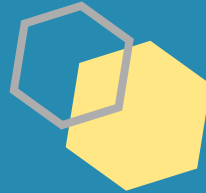




Introduction to Specialized Homes and Support Services (SHSS)



14 September and 5 October 2023

Land Acknowledgement



We respectfully acknowledge with gratitude the traditional lands and waters on which we live and work.

We give thanks to the traditional keepers of these lands and are grateful for the continued relationship with Indigenous peoples across this province.

HOUSEKEEPING



- As we are a big group today, **please put any questions or comments you have into the chat, and we will respond to questions/ take comments at the end of the presentation.**
- We'll aim to answer as many questions as we can during today's session and will follow-up as appropriate.
- **We will share this slide deck with you after today's meeting.**



Specialized Homes and Support Services (SHSS)

AGENDA

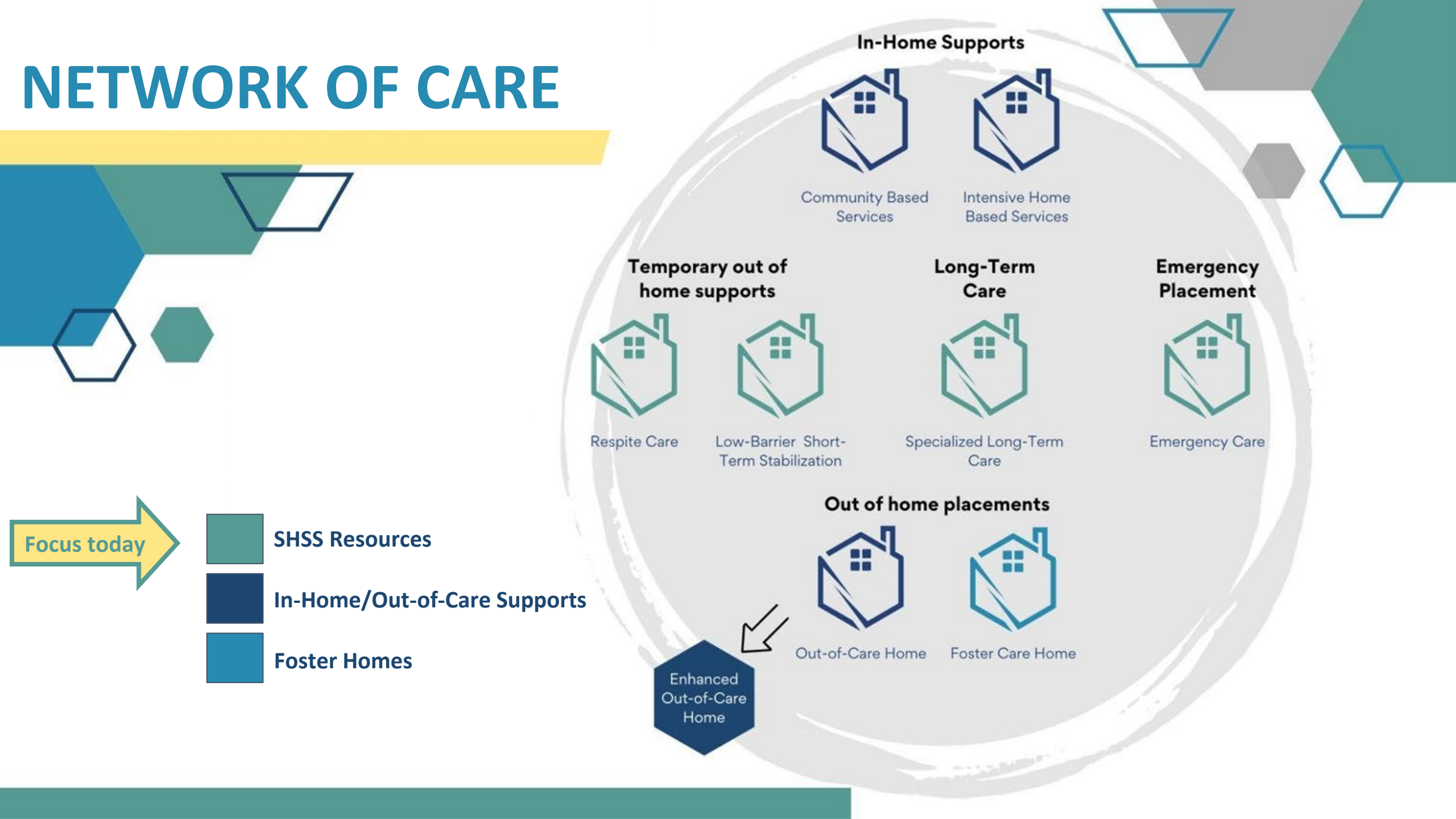


- 1 The SHSS transformation and how we got here
- 2 The four SHSS Service Types
- 3 New opportunities for Service Providers
- 4 Questions and Comments



Specialized Homes and Support Services (SHSS)

NETWORK OF CARE



BENEFITS FOR CHILDREN, YOUTH AND FAMILIES

The SHSS transformation is focused on:

Enhancing opportunities to build lasting relationships

Mitigating crisis and stabilizing families and caregiving arrangements

Providing individualized, high-quality care

Promoting child and youth wellness and belonging

Providing oversight and outcomes-based monitoring

HOW DID WE GET HERE?



Review of recommendations/consultations



Understanding who we serve: data analysis



Contract deep dive



Service design/research/collaboration



Modelling the system



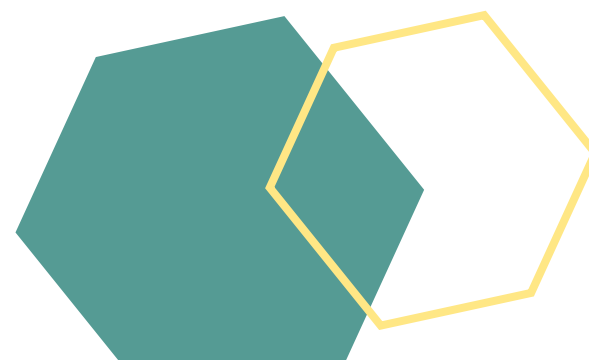
Service expectations and province-wide engagement



Rights holders engagement



Early Implementation Areas & Sponsor Group engagement



THE 4 SHSS SERVICE TYPES



**Specialized Long-Term
Care**



Emergency Care



Respite Care



**Low-Barrier Short-Term
Stabilization Care**



BENEFITS OF THE SERVICES



Specialized Long Term Care (SLTC)	Emergency Care	Respite Care	Low Barrier Short Term Stabilization Care (LBSTS)
<ul style="list-style-type: none">• Children and youth will experience consistency in their care environment• Improves outcomes and connection to community support services• Better support for transition to adulthood	<ul style="list-style-type: none">• Provides opportunity to develop an appropriate living arrangement or placement• Informs child-centered ongoing care and placement decisions• Supports improving outcomes for vulnerable children, youth and families	<ul style="list-style-type: none">• Preserves and enhances existing living arrangements• Provides a temporary break for caregivers/providers• Mitigates the risk of a child or youth coming into care	<ul style="list-style-type: none">• Mitigates a child or youth's crisis and promote belonging to culture, family and community• Availability of on-site clinicians to provide assessments, interventions and therapies• Available for children and youth with any legal status



NEW OPPORTUNITIES FOR SERVICE PROVIDERS



Transition legacy (existing) contracts with existing Service Providers to new SHSS contract language and expectations

- Intent is to **maintain stability for children and youth** living in existing homes
- New IMIT, including a **new Service Provider portal**
- **Enhanced oversight** of homes
- Okanagan and North Fraser are the **first two Early Implementation Areas (EIAs)**, transformation is underway
- Provincial roll-out is targeted to begin in **November 2023**

Note: All new contracts will be stood up through the CFR

Provincial SHSS Call for Response (CFR) solicitation to pre-qualify Service Providers.

- The SHSS solicitation will expand the network of care by:
 - **Encouraging new applicants** including small, rural, remote, Indigenous-led and local Service Providers
 - Encouraging **existing Service Providers to expand their services and the regions** in which they operate
- A non-binding '**Call for Responses**' (CFR) is being used to **pre-qualify Service Providers** and can be found on BC Bid (see next slide)
- Intent is to **pre-qualify all respondents who can deliver the standard of care required**; Ministry will build and continually add to the pre-qualified list of Service Providers
- The CFR is an open call for responses. **The next review of applicants will take place in November**

BENEFITS OF NEW APPROACH FOR PROVIDERS



- Opportunity for **smaller Providers/Indigenous Providers**
- Opportunity for **Providers who do not currently provide bed-based services** but who provide similar services (e.g., crisis services for youth, adult bed-based services)
- CFR is **open for 10 years** with responses reviewed quarterly (or as otherwise decided by the Ministry)
- Service Providers have an **equal opportunity to respond** for potential inclusion on the pre-qualified list
- **Opportunity to work with someone to strengthen and resubmit**, if a Provider's submission is not successful

BENEFITS OF NEW APPROACH FOR PROVIDERS



NEW MODEL

- Providers receive **reliable baseline funding** that is capacity-based (moving away from ‘ a bed filled is a bed funded’)
- Funding amounts include **allocated set of funds to address the unique needs of child or youth**
- Staff wages are aligned to union rates (**CSSEA**)
- **Moving away from reporting for the sake of reporting**; by completing the Care Plan, Providers have completed most of their reporting requirements
- **Service Provider Portal provides transparency** on payment processing, resource planning, tracking



HELPFUL RESOURCES

If you have any questions or need help navigating these resources, please email us.



SHSSTransformation@gov.bc.ca

You will receive a response within 10 business days

Existing / Legacy Contracts

- Talk to your Local Director of Operations
- External SharePoint for existing Legacy Service Providers
- New website (coming soon) with resources for existing Legacy Service Providers

CFR on BC Bid

- Respite and Relief Care: ([Requirements PDF](#)) | ([BC Bid Link](#))
- Emergency Care: ([Requirements PDF](#)) | ([BC Bid Link](#))
- Low-Barrier Short-Term Stabilization Care: ([Requirements PDF](#)) | ([BC Bid Link](#))
- Specialized Long-Term Care: ([Requirements PDF](#)) | ([BC Bid Link](#))

All CFR questions need to be asked through BC Bid (due to procurement rules).

Other Resources (*Video Links*)

[What are Specialized Homes and Support Services](#)

[SHSS Key Roles and Responsibilities](#)

[The 4 Types of Specialized Homes and Support Services](#)

Questions and
Comments?



Specialized Homes and Support Services (SHSS)

Appendix



Specialized Homes and Support Services (SHSS)

SHSS 4 KEY SERVICES

Each “Service Type” has a different standardized contract template.

Emergency Care (EC)

Short-term placement for children and youth who cannot live safely with their family or other Out-of-Care arrangement at the relevant time, have been removed from their home by the Director or for whom an existing placement has broken down, and for whom no other appropriate care arrangement is readily available.

Respite Care (RC)

A family preservation service that provides a culturally safe, developmentally appropriate and structured environment outside of the primary living arrangement for children and youth with varying complex needs.
Part of a support plan to maintain a child/youth’s living arrangement within the family and/or prevent children/youth from coming Into Care and are intended for various service recipients.

Low Barrier Short Term Stabilization Care (LBSTS)

Culturally safe, individualized supports for children and youth who are experiencing a crisis and/or breakdown of their living environment (family, Out-of-Care arrangement or In Care placement).
Services support children, youth and families who often experience barriers to service, such as those without a formal diagnosis, those experiencing a functional crisis, or those experiencing living instability.

Specialized Long Term Care (SLTC)

A 24-hour staffed and specialized environment for children who require intense supervision and support, including those with exceptional needs, where all other living arrangements have been unable to provide the required level of support.